



YOUR  
CLEANING  
PARTNER

**SPECIALIZED CLEANING PROFESSIONALS**  
FOR HOMES, BUSINESSES AND INDUSTRY

# CONTENT

*Click on subject to show the page*

## OUR SERVICES

- \* GENERAL LABORS
- \* GYPCRETE PREP
- \* SKILLED LABORS
- \* AIR TEST PREP
- \* FINAL CLEANING
- \* DEEP CLEANING
- \* MOVE IN / MOVE OUT CLEANING
- \* POST CONSTRUCTION

## SKILLED LABORS

- \* FALL PROTECTION
- \* SCISSOR LIFT
- \* ZOOM BOOM LIFT
- \* ELEVATOR OPERATORS

AIRTIGHTNESS PLAN TEST  
KITCHEN & BATHROOM CABINETS PROTECTION  
BATHTUBS & SHOWERS PROTECTION  
FLOOR PROTECTION  
INSPECTION OF DAMAGED ITEMS  
VACUUMING  
GENERAL CLEANING SERVICES  
FINAL CLEANING

OTHER SERVICES  
MOVE IN MOVE OUT CLEANING  
POST - CONSTRUCTION SERVICES  
MAINTENANCE CLEANING  
DEEP CLEANING SERVICES  
RV VEHICLE CLEANING  
COMMERCIAL CLEANING  
KEY TO OWNER (KTO)

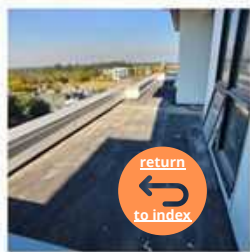


# GENERAL LABOUR

## P E R S O N N E L

Unskilled workers on a construction site who perform basic tasks such as moving materials, cleaning up, and assisting skilled tradespeople.

# GENERAL LABOUR PERSONNEL



# GENERAL LABOUR PERSONNEL



*before  
cleaning P1 parcel 6.3  
A and B  
Oct 5*



*after  
cleaning P1  
parcel 6.3A and B  
Oct 5*



# GENERAL LABOUR PERSONNEL



*before  
cleaning P1*

*parcel 6.3 A and B  
Oct 5*



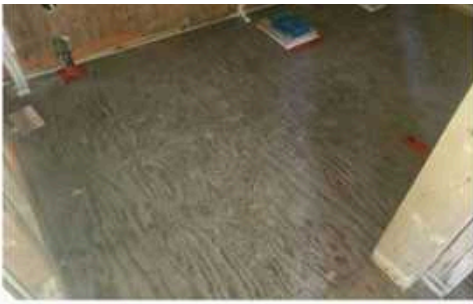
*cleaning P1  
parcel 6.3 A and B  
Oct 5*





# GENERAL LABOUR PERSONNEL





# GYPCRETE PREPARE

This typically involves cleaning the surface,  
repairing any cracks or damage.  
Cleaning the surface, seal any gap, prevents  
leaking





# GYPCRETE PREPARE

# GYPCRETE PREPARE





# SKILLED LABORS

Our skilled labor, including general cleaners, debris removal specialists, window cleaners, floor technicians, and final cleaning specialists, forms the foundation of our construction cleaning services. Trained in specialized post-construction cleanup and safety protocols, our team removes debris, paint, adhesives, and grout haze. Proficient with specialized equipment, we prioritize safety and guarantee superior cleanliness for a seamless transition to occupancy



# FALL PROTECTION

## IN CLEANING SERVICES

Safety is paramount in our cleaning services, especially regarding fall protection. Our trained personnel, including window cleaners, high-rise cleaners, and rope access technicians, specialize in elevated work.

They are rigorously trained in fall protection systems, including harness use, anchor point inspection, and rigging. Adhering to strict OSHA and industry standards, we utilize state-of-the-art equipment like aerial lifts, scaffolding, and rope access systems. Our comprehensive program includes regular inspections, audits, and ongoing training to minimize risks and maintain a safe environment.





# SCISSOR LIFT

## C L E A N I N G

Scissor lifts are integral to our construction cleaning services, providing safe and efficient access to elevated areas. Our operators are extensively trained and certified in scissor lift operation, including pre-use inspections, safe maneuvering, and proper positioning.

We adhere to strict safety protocols, ensuring level ground operation, proper guardrail usage, and adherence to weight limits. Our commitment to safety minimizes risks and allows our cleaning teams to effectively address tasks such as high window cleaning, ceiling cleaning, and other elevated cleaning needs on construction sites.





# ZOOM BOOM LIFT

## C L E A N I N G

Zoom boom lifts are essential for accessing challenging areas in our construction cleaning services. Our operators undergo rigorous training and certification for safe zoom boom operation, including pre-use inspections, precise maneuvering, and proper stabilization techniques. We strictly adhere to safety protocols, ensuring stable ground conditions, proper outrigger deployment, and adherence to load capacities. This commitment to safety allows our cleaning teams to efficiently and safely perform tasks like high-elevation window cleaning, façade cleaning, and other hard-to-reach cleaning needs on construction sites.



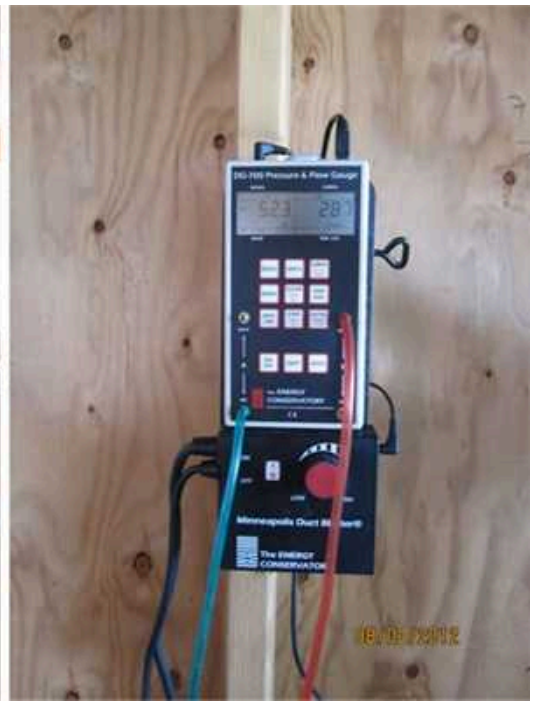


# ELEVATOR

## O P E R A T O R S

While often overlooked, elevator operators play a crucial role in construction cleaning. They ensure the safe and efficient transport of personnel, equipment, and cleaning supplies to various floors, minimizing downtime and maximizing productivity. Their expertise in elevator operation and safety protocols is essential for smooth workflow on multi-story projects.





# AIRTIGHTNESS PLAN TEST

This Is the process of evaluating the airtightness of a building's envelope, which is crucial for energy efficiency and indoor air quality.

This test measures the amount of air leakage through the building's walls, windows, doors, and other openings.

# AIRTIGHTNESS PLAN TEST



# AIRTIGHTNESS PLAN TEST





# AIRTIGHTNESS

P L A N   T E S T

**BUILDING-4  
LEVEL-4  
UNIT-404-HALF  
MAY.10.2021**



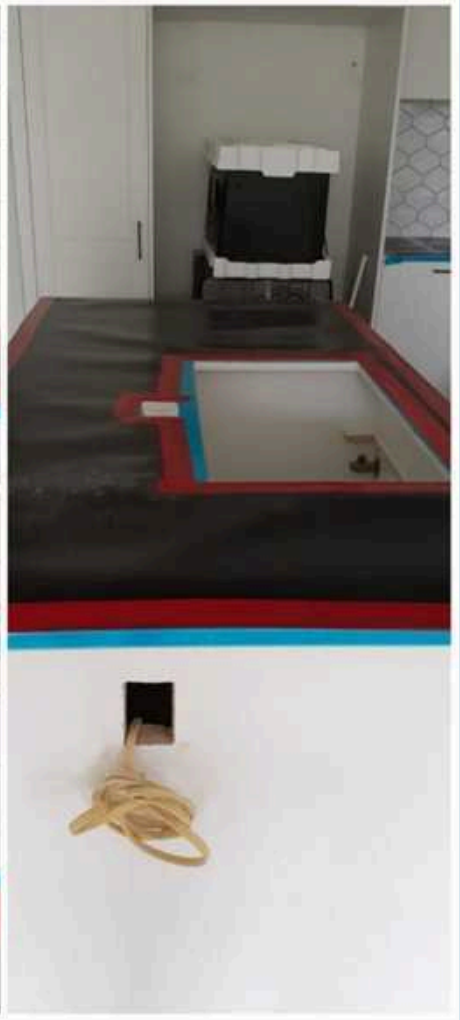
**AFTER**

# KITCHEN & BATHROOM CABINETS

## P R O T E C T I O N

Kitchen and bathroom cabinets protection is the process of covering and safeguarding these fixtures during construction to prevent damage.





# KITCHEN & BATHROOM CABINETS

P R O T E C T I O N



# BATHTUBS & SHOWERS PROTECTION





**DONE**  
**B:1. F:4**  
**UNIT:405**  
**18/MAY**

# FLOOR

P R O T E C T I O N

Covering and protecting door sills to prevent damage during construction.



# FLOOR PROTECTION



# FLOOR PROTECTION





# INSPECTION

O F D A M A G E D I T E M S

Walls, cabinets, bathrooms, etc. refers identification and documentation of any damage to these building components during the construction process, which may need to be repaired or replaced.





# VACUUMING

U N I T S

Thoroughly cleaning and vacuuming construction areas in preparation for the application of primer or other finishing materials.





# CLEANING SERVICES

Regular cleaning and maintenance of a construction site to keep it organized, safe, and free of debris.



# CLEANING SERVICES



Cleaned door/glass of Balcony (outside) B3-L6 U-602 (21-10-2021)

# CLEANING SERVICES

After  
Washing frames B2  
Eastside/Southside  
Sept.10



# CLEANING SERVICES



Before  
Removing  
Protection tape  
B2  
Sept.08



# CLEANING SERVICES



# CLEANING SERVICES



**B4  
North stairs  
black pipes  
L6, L4 to L1  
Before  
Oct 20**



PIC-COLLAGE



**Clean black pipes  
L6/L4/L3/L2/L1**

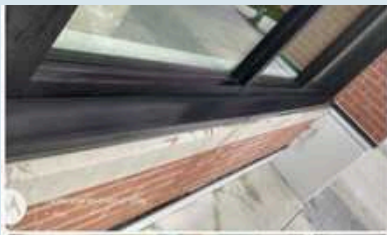


**After  
Oct 20**

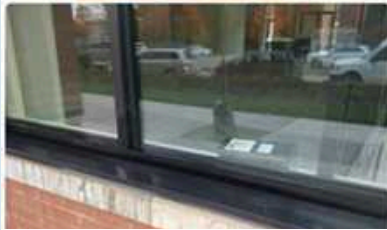
[return  
to index](#)

PIC-COLLAGE

# CLEANING SERVICES



After cleaning  
B1, West side, CRU  
Storefront sills  
18/Oct



Pressure washer  
B4:B8  
P2  
Nov.05



Before

After

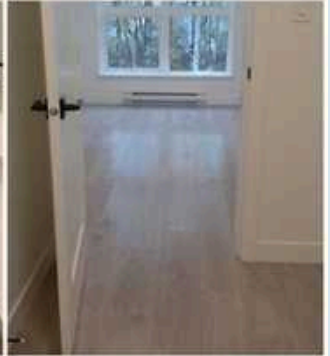
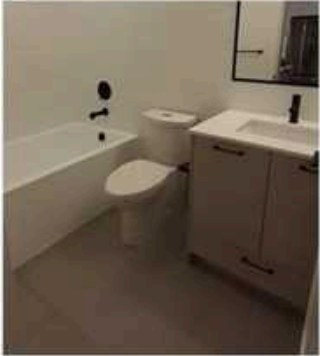
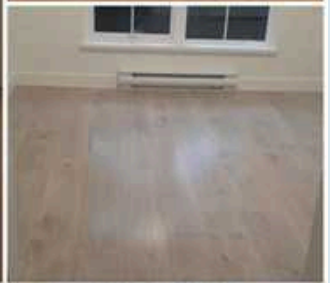


# FINAL CLEANING

## S E R V I C E S

Thorough cleaning of a completed construction project, including all surfaces, fixtures, and equipment, to prepare the space for occupancy





# FINAL CLEANING SERVICES





Building 4  
Level 4  
Unit 402



# OTHER SERVICES



# OTHER SERVICES



**BEFORE**

**BUILDING-1  
LEVEL-6  
UNIT-603**



**AFTER**

**DIC.2.2020**

# OTHER SERVICES





# MOVE IN MOVE OUT CLEANING

Cleaning service provided to prepare a space for new occupants or to clean a space after occupants have moved out.





# POST - CONSTRUCTION S E R V I C E S

Our post-construction cleaning services rely on skilled professionals, including general cleaners, debris removal specialists, window cleaners, floor technicians, and final cleaning specialists. Trained in specialized techniques and safety protocols, our team tackles debris, paint, adhesives, and grout haze. Equipped with specialized tools, we prioritize safety and guarantee a spotless, move-in ready space.





# MAINTENANCE CLEANING

Regular, ongoing cleaning and upkeep of a building or facility to keep it in good condition





# DEEP CLEANING SERVICE

Deep Cleaning Service is a more intensive cleaning process that goes beyond regular maintenance to thoroughly clean and sanitize a space.





# RV VEHICLE CLEANING S E R V I C E

Specialized cleaning service for  
recreational vehicles





# COMMERCIAL CLEANING SERVICE

Residential and Commercial cleaning services tailored to the specific needs of residential and commercial properties, respectively.





# KEY TO OWNER

K T O

When the new owner of the house receives his keys, we accompany him in a brief inspection to verify that everything is fine and if there are details which need to be cleaned.

